



## **eTap: Solar + Mains Electric Car Charging**

An *eTap* in your car park will charge 6 electric cars using Solar Energy and power from the National Grid



# I. Electric Car Charging

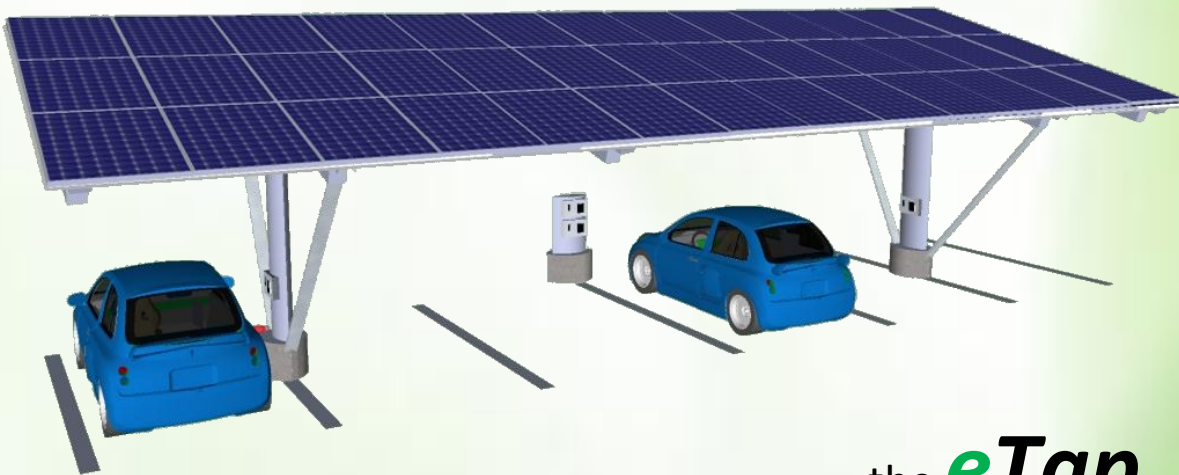
---

By 2020 around 1.7 million cars will be battery electric or plug-in hybrid.  
(4th Carbon Budget, Committee on Climate Change, advisors to the UK Government)

Have you thought about what this means for you and your business?

Wherever there is parking for cars there could, in the near future, be electric car top-up points; some from the mains and some from a mix of mains and solar energy like *eTap*.

Electric car drivers are expected to top-up every time they reach their destination, and will increasingly choose destinations according to the availability of charge points.



the **eTap**

By thinking about *eTap* now, your business can benefit from the ever-increasing awareness of green issues while simultaneously tapping into the Government's generous Feed in Tariff for solar energy.

## II. Making Charging Easier and Greener

---

### Electric Vehicle Chargers

*eTap* can be tailor made to your car park to charge any number of electric cars simultaneously. Drivers simply need to pull into the available spaces, plug in, pay by phone and then walk away; leaving their car safely charging.

### Solar Panels

*eTap* is topped with 45 solar panels. These earn an immediate income from the Feed-in Tariff and contribute to the electricity required to charge electric cars. The power from the panels is first routed through a nearby building (where it can be used for free) before being routed to the car chargers. Excess demand from the chargers will be met by the National Grid.

### Simple to Operate

To pay, simply use your phone to call up the first time you arrive to register your credit card, then for every subsequent visit your phone number will be recognised. Payment is made on a per hourly basis with the chargers switching off after the elapsed time period

### Destination Charging

Rather than risk running out of power, electric car drivers are likely to top up every time they reach their destination. New electric cars are fitted with sat navs which let the driver know where the nearest charge point is. The result is that by installing *eTap* businesses are placing themselves squarely on the electric car driver's map.



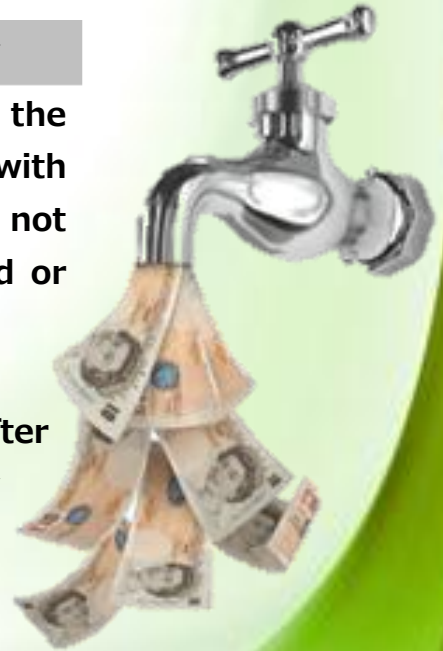
## III. Making Charging Profitable Now

---

### Get Paid to Generate Electricity

The electricity generated by the solar panels will earn the owner an annual return of around 7% (increasing with RPI), irrespective of whether the electricity is used or not and irrespective of whether the car chargers are used or not

Returns from the Feed In Tariff for an *eTap* installed after April 2012 will be lower and will continue to drop every subsequent year



### Be an Electric Car-Friendly Destination

There is an additional revenue stream available from charging electric cars. This will start slowly but is expected to rise to an anticipated 20% annual return.

Give your business a head start with *eTap* electric car charging!

*eTap* can provide you with several purchasing options which can be tailored to your business needs. You have the opportunity to buy the *eTap* outright or we can purchase it for you and keep the income.

We offer a free feasibility survey to help you decide which option is best for you.

# Our Business

---

**eTap** is a division of Use The Sun Ltd: a family-run business in Essex. Our commitment is to the application of solar energy and the development of new sustainable technologies in the UK. Through our flagship product, **eTap**, we hope to take our place in the building of Britain's electric car charging infrastructure.

Find us online at:

**[www.electricityontap.co.uk](http://www.electricityontap.co.uk)**

Use The Sun Ltd  
52 Denby Grange  
Harlow  
Essex CM17 9PZ

**0800 612 3251**